

Approved Document for Maldives Building Code **Laundrying** Clause G2

Prepared by the Construction Industry Development Section of the Ministry of Construction and Public Infrastructure based on the Approved Document prepared by the Building Industry Authority of New Zealand.

Enquiries about the content of this document should be direct to:
Construction Industry Development Section
Ministry of Construction and Public Infrastructure
Telephone: 3323234 Fax: 3328300
Email: cids@construction.gov.mv

Maldives Building Code

Clause G2 Laundering

This Clause is extracted from the Maldives Building Code.

Clause G2—LAUNDERING	
Provisions	Limits on application
<p>OBJECTIVE</p> <p>G2.1 The objective of this provision is to ensure:</p> <p>(a) <i>Adequate amenities</i> for people to do laundering, and</p> <p>(b) That <i>people with disabilities</i> are able to carry out normal activities and processes within <i>buildings</i>.</p> <p>FUNCTIONAL REQUIREMENT</p> <p>G2.2 <i>Buildings</i> shall be provided with <i>adequate</i> space and facilities for laundering.</p> <p>PERFORMANCE</p> <p>G2.3.1 Facilities shall have capacity for the <i>intended use</i>, and consist of <i>fixtures</i>, or space and services laundering.</p> <p>G2.3.2 Space and facilities shall be provided within each accommodation unit or may be grouped elsewhere in a convenient location.</p>	<p>Objective G2.1 (b) shall apply only to those <i>buildings</i> to which serve the public, <i>buildings</i> designated for Disabled Persons’ use and to <i>buildings</i> where accessibility is required by any other Act.</p> <p>Requirement G2.2 shall apply only to <i>Housing</i>.</p>

Contents

	Page
References	4
Definitions	5
Verification Method G2 /VM1	6
Acceptable Solution G2 / AS1	7
1.0 Laundering Facilities	7
1.1 Service connections	7
1.2 Accessibility	7
1.3 Number of facilities	8

References

For the purposes of Maldives Building Code compliance, referenced documents shall be deemed to include any amendments issued prior to the date of the Approved Document as displayed at the foot of the page on which the references are listed.

Standards Association of Australia

AS 1229: 1989 Laundry troughs

Where quoted

AS1 1.0.3

Definitions

This is an abbreviated list of definitions for words or terms particularly relevant to this Approved Document.

Accessible Having features to permit use by *people with disabilities*.

Adequate *Adequate* to achieve the objectives of the *building code*.

Amenity An attribute of a *building* which contributes to the health, physical independence, and well being of the *building's* users but which is not associated with disease or a specific illness.

Building has the meaning ascribed to it by the Building Code.

Discharge pipe Any pipe which is intended to convey discharge from *sanitary fixtures* or *sanitary appliances* and includes a *waste pipe, combined waste pipe, branch discharge pipe* and *discharge stack*.

Fixture An article intended to remain permanently attached to and form part of a *building*.

Fresh water shall be from water mains or bone water

Intended use of a *building* includes:

- a) Any reasonably foreseeable occasional other use that is not incompatible with the intended use; and
- b) Normal maintenance; and
- c) Activities taken in response to *fire* or any other reasonably foreseeable emergency – but does not include any other maintenance and repairs or rebuilding.

People with disabilities means any *person* who suffers from physical or mental disability to such a degree that he or she is seriously limited in the extent to which he or she can engage in the activities, pursuits, and the processes of everyday life.

Socket outlet An accessory fixed to a wall or ceiling and designed to accept a plug that extends the electrical supply to an appliance by means of a flexible cable.

Water seal The depth of water that can be retained in a *water trap*.

Water trap A fitting designed to retain a depth of water that prevents foul air and gases escaping from the *plumbing system* or *foul water drainage system* and entering a *building*.

Verification Method G2/VM1

No specific test methods have been adopted for verifying compliance with the Performance of MBC G2.

Acceptable Solution G2/AS1

1.0 Laundering Facilities

1.0.1 Laundering facilities shall be provided with:

- a) A laundry tub, or
- b) Space and service connections for a washing machine.

1.0.2 A laundry tub shall:

- a) Have a capacity to spill-level of no less than 35 litres, and
- b) Be capable of fully containing a solid cylinder of 400 mm diameter and 200 mm depth.

COMMENT:

This provision allows for the filling or washing of containers such as buckets.

1.0.3 Alternative solution

Laundry tubs complying with AS 1229 are acceptable, but exceed the requirements given in Paragraph 1.0.2.

1.1 Service connections

1.1.1 A tub shall be provided with a fresh water supply.

1.1.2 Space provided for a washing machine shall have a fresh water supply, a *discharge pipe*, a *water trap*, and an adjacent 13 amp *socket outlet*.

1.1.3 Plumbing and drainage for waste water from the tub and washing machine *discharge pipe* shall be provided as required by MBC G13 "Foul Water".

COMMENT:

MBC G9 "Electricity", G12 "Water Supply", and G13 "Foul Water" are also relevant to laundering facilities.

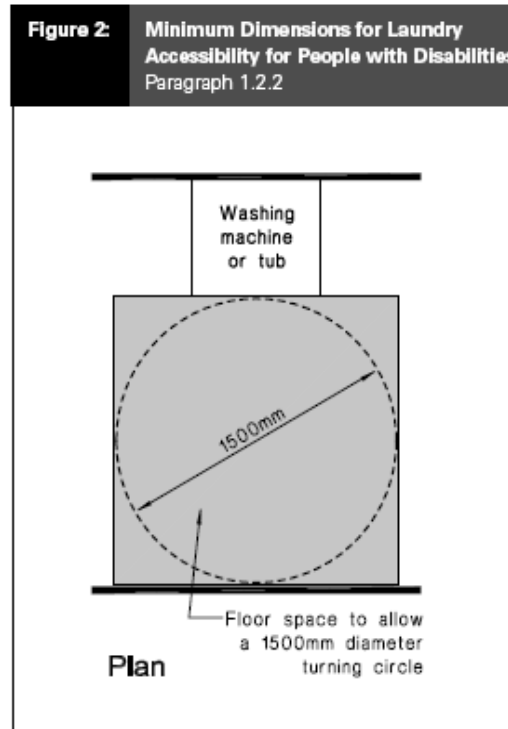
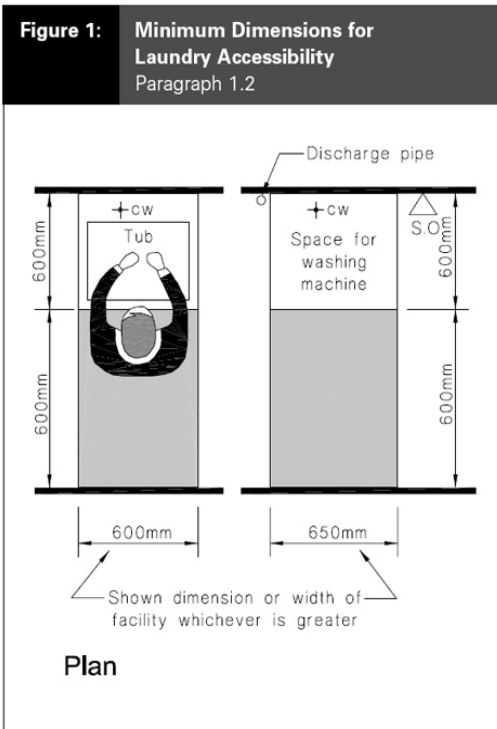
1.2 Accessibility

1.2.1 Laundry floor space shall be no less than shown in Figure 1.

1.2.2 Where laundry facilities are intended for *people with disabilities*, space to allow a turning circle of 1500 mm shall be provided in front of the laundry tub or washing machine, as shown in Figure 2.

COMMENT:

The washing machine space dimensions allow for a range of popular machines. Designers should check current models and increase the size if necessary.



1.3 Number of facilities

1.3.1 Laundering facilities shall be provided according to the number of people being serviced. Acceptable provisions are shown in Table 1.

Table 1: Provision of Laundering Facilities
Paragraph 1.3.1

Defined use	Number required
Detached dwelling or separate <i>household unit</i> to accommodate no more than 2 people	Nil
Detached dwelling or separate <i>household unit</i> to accommodate 3 or more people, and early childhood centres	1
Group dwelling, old people's homes, and work camps	1 per 20 people
Multi-unit dwellings (common laundry space)	1 per 4 dwelling units